



We offer ideas to  
*Analyze your business* beyond expectations

# Store, analyze and visualize with Analyticmate

## Plug & Play Big Data

Analyticmate lets companies detect problems in real time and build analytical models that transform daily operations into intelligent business decisions. Unlike other products, Analyticmate offers a Big Data solution that ensures maximum performance and high scalability at a competitive price.

The design of our appliance allows to collect information from internal and external business sources of intelligence, providing a **centralized repository**, for advanced correlations and applying **analytical models** easily. All this through a friendly **100% web interface** with all our components preinstalled on our appliance.

### The big challenge

- At present, traditional solutions are **not optimal architectures** to process, manage and analyze large volumes of unstructured information. Companies are trying to cope with this situation, stretching their architectures at a **great cost** and do not resolve the problem appropriately.
- Given that the information is growing exponentially, it makes no sense to consider the current management solutions like business drivers in the medium term.

### Our solution

**Analyticmate** greatly exceeds these limitations:

- By leveraging the Big Data ecosystem, Analyticmate can **process, store and analyze in real time** large volumes of events from different sources on a Big Data infrastructure.
- Analyticmate has a **40% lower cost** compared to similar products on the market with a unique proposition in an **appliance** model with pure Big Data technology.

OPERATIONAL  
INTELLIGENCE



LOGS MANAGEMENT  
AND OPERATIONS



CYBERSECURITY AND  
COMPLIANCE



# Analyticmate Modules

Summary of main components of the solution

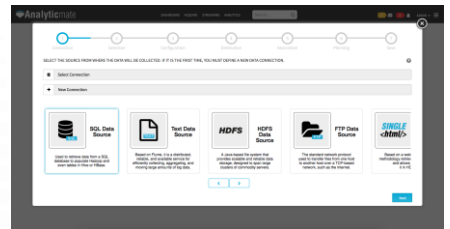
## Analyticmate Dashboards

- 100 % custom graphics
- Real-time updating
- Dashboards multiuser (profiles)
- Import / Export of graphics



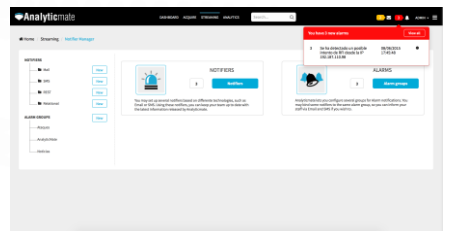
## Analyticmate ETL

- Information uploading graphically and simple
- Connectors: DB, FTP / SFTP, HDFS, HTML Crawler, Local File, Syslog Agent, etc.
- Encryption and lifetime of information



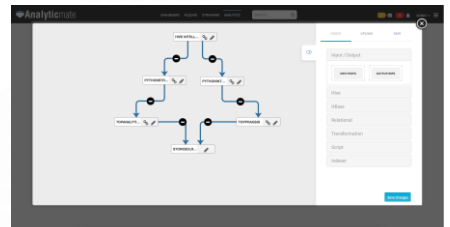
## Analyticmate Streaming

- Definition of rules and events detection in real time
- Alarm Notifications: REST, email and relational databases exports



## Analyticmate Analytics

- Definition of models via web and simple
- Supported languages : Python Hadoop and R Hadoop
- Libraries import via web



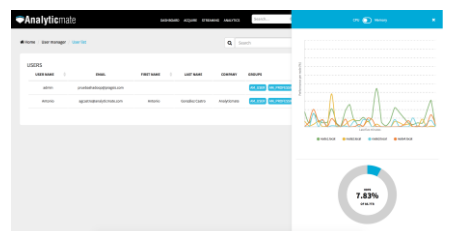
## Analyticmate Search

- Advanced and dynamic search system
- SolR indexing technology
- Export results: CSV, JSON and XML
- Advanced temporal filter



## Analyticmate Manager

- Repository Management
- Users / Groups (data access authorization)
- Display and alarm management
- Constant appliance monitoring



## Components

Technical details and performance

### Hardware\*

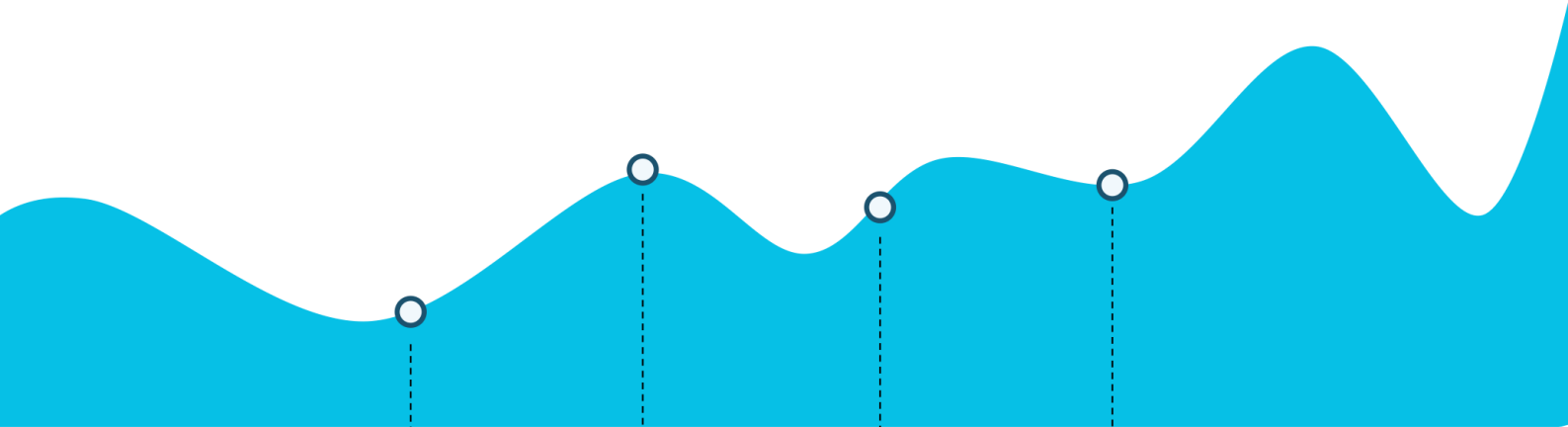
<b>Processor</b>	Intel Octo Core	ES-2630 V3
<b>Memory</b>	256GB RAM	DDR4
<b>Hard disk</b>	4 x 4 HDD 4TB	SATA3
<b>SSD hard disk</b>	4 x 4 HDD SSD 960GB	Enterprise
<b>Network</b>	2 x 10 GBE	Base T

\* Specifications for every node.

**x4 nodes**  
 Modular commercialization  
 with a minimum of 4 nodes

### Software

<b>Solution</b>	Analyticmate V1.0
<b>Platform</b>	Cloudera CDH53
<b>Operating System</b>	CentOS 6
<b>Service layer</b>	HDFS, Hive, HBase, Flume, Sqoop, Pig, Impala, Zookeeper, Yarn, SolR and Sentry
<b>Application layer</b>	Java, Apache, Tomcat, MySQL y Nagios



**INGESTION**  
**1TB/day**



**CAPACITY**  
**40TB**



**EVENTS**  
**1M/s**



**SUPPORT**  
**24x7**

### PERFORMANCE METRICS WITH TWO MODULES OF 4 NODES



**WANT TO BE A PARTNER?**

[www.analyticmate.com/partnership](http://www.analyticmate.com/partnership)